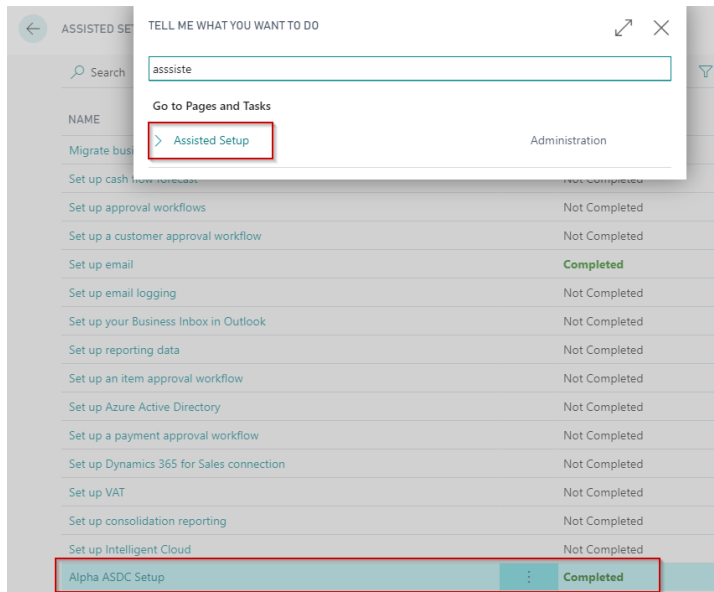


Setup Aproda Document Automation

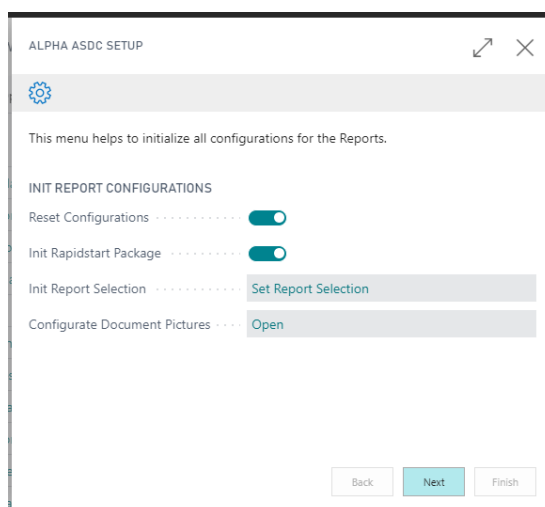
1. Open *Assisted Setup*.
2. Choose *Aproda ASDC Setup*.



In the next steps, the wizard guides you through the initial setup of Aproda Document Automation.

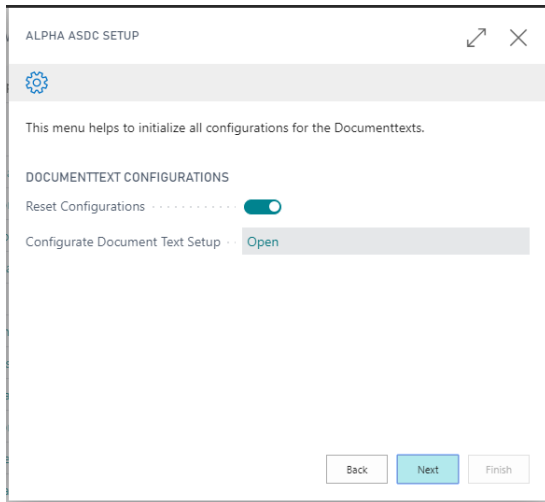
Init Report Configuration

- **Reset Configurations:** This function resets all report configurations. The first reset initializes the report configuration. Configurations already made are lost.
- **Init RapidStart Package:** Initializes the RapidStart package to import and export all report configurations.
- **Init Report Selection:** By clicking Set Report Selection, you can define which Aproda Document Automation documents should be used for order processing.
- **Configure Document Pictures:** Here you can define your footer and header for documents



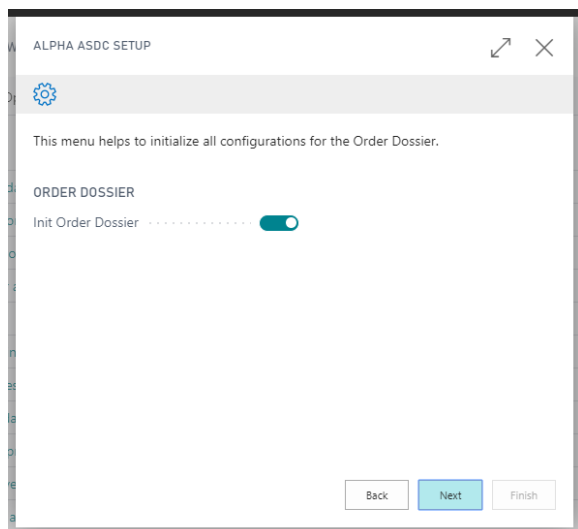
Documenttext Configurations

- *Reset Configurations*: This function resets all document text configurations. The customer adjustments are deleted.
- *Configure Document Text Setup*: Here you can carry out the setup for your document texts



Order Dossier

- *Init Order Dossier*: This function initializes the order dossier.



E-Mail Configurations

- *Reset Configurations*: This function resets all e-mail configurations. The customer configurations are deleted.
- *Start SMTP Setup*: This link takes you directly to the e-mail setup
- Click *Finish* to complete the setup for Aproda Document Automation.

